

LTX Technical Data

Electric Tractor and Platform Truck

LTX 20

LTX-T 04



LTX Electric Tractor and Platform Truck

Intelligent towing

This specification sheet, which conforms to VDI guideline 2198, provides the technical values for the standard equipment only. Different tyres, other masts, the use of accessories, etc. may result in other values

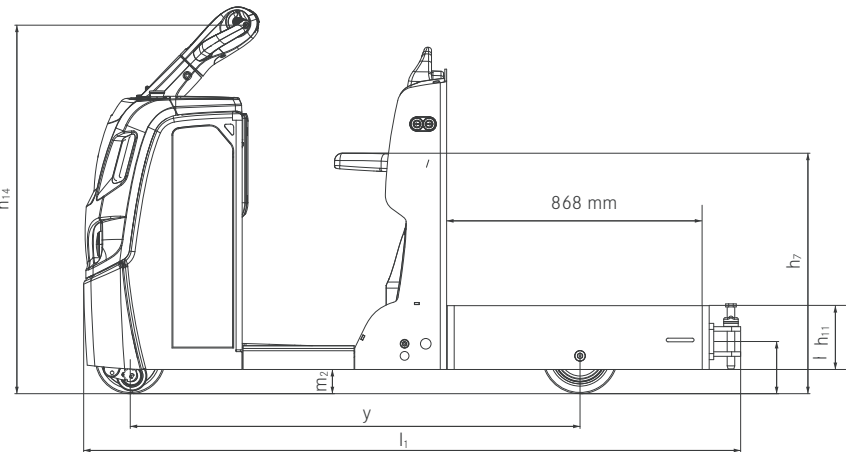


Distinguishing marks	1.1	Manufacturer			STILL	STILL
	1.2	Manufacturer's type designation			LTX 20	LTX-T 04
	1.3	Drive			Electric	Electric
	1.4	Operation			Standing	Standing
	1.5	Nominal load capacity/load	Q	kg	2000	400/1000 ¹
	1.7	Rated drawbar pull	F	N	400	400
Weights	1.9	Wheel base (±3 mm)	y	mm	907	1487
	2.1	Weight incl. battery		kg	620 ²	755 ²
	2.3	Axle loadings unladen	front/rear	kg	325/295	415/340
Tyres/chassis	3.1	Tyres	front/rear		Solid rubber/superelastic	Solid rubber/superelastic
	3.2	Tyre size	front	mm	Ø 230 x 75	Ø 230 x 75
	3.3	Tyre size	rear	mm	2 x Ø 250 x 80	2 x Ø 250 x 80
	3.4	Support castors		mm	2 x Ø 100 x 40	2 x Ø 100 x 40
	3.5	Wheels - number (x = driven wheel)	front/rear		1x + 2/2	1x + 2/2
	3.6	Track width (±3 mm)	front/rear	b ₁₀ /b ₁₁	mm	418/484
Basic dimensions	4.5	Back rest/seat height	min./max.	h ₇	mm	754/1044
	4.9	Height of tiller in driving position	min./max.	h ₁₄	mm	1178/1278
	4.12	Coupling height		h ₁₀	mm	167
	4.13	Loading height	unladen	h ₁₁	mm	-
	4.17	Overhang length with single-stage coupling		l ₅	mm	243
	4.19	Overall length		l ₁	mm	1305
	4.21	Overall width (±3 mm)		b ₁ /b ₂	mm	600
	4.32	Ground clearance, centre of wheel base		m ₂	mm	40
	4.35	Outer turning radius		W _a	mm	1080
	4.35	Outer turning radius				1660
Performance data	5.1	Travel speed	laden/unladen		km/h	8/8
	5.5	Drawbar pull S2 60 min		N	400	400
	5.3	Max. drawbar pull S2 5 min		N	2000	2000
	5.8	Gradeability S2 5 min	laden/unladen	%	5/10	5/10
	5.10	Brakes			Electromagnetic	Electromagnetic
Electric engine	6.1	Drive motor, output S2 60 min		kW	1.5	1.5
	6.3	Battery to IEC standard			2 PZB	2 PZB
	6.4	Battery capacity K _s		V/Ah	24/200	24/200
	6.5	Battery weight (±5%)		kg	185	185
	6.6	Energy consumption according to VDI cycle		kWh/h	1.21 (62 cycles/hour)	1.35 (59 cycles/hour)
Misc.	8.1	Type of drive unit			AC control	AC control

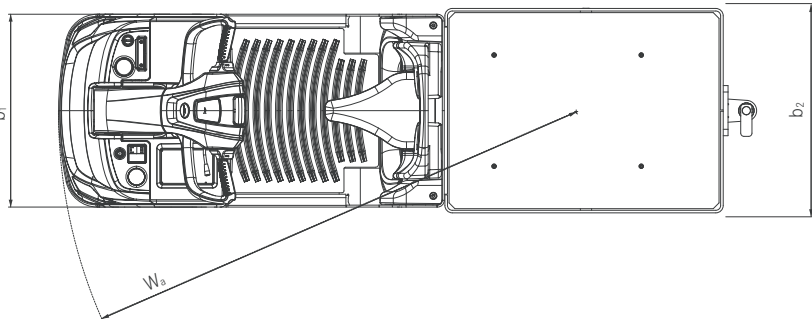
¹ Rated capacity on-board platform/trailer load to the coupler

² ±10%

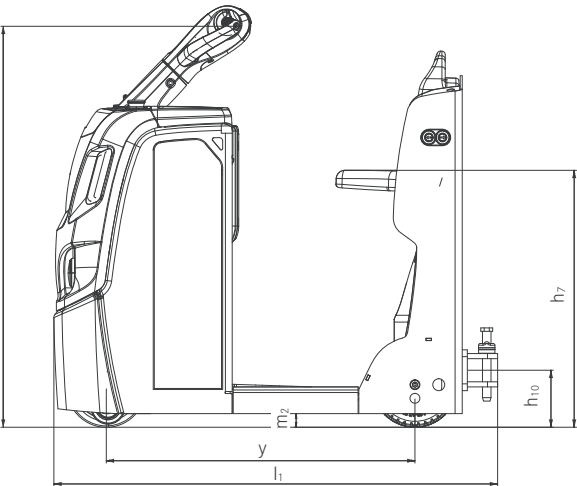
LTX Electric Tractor and Platform Truck
Technical Drawings



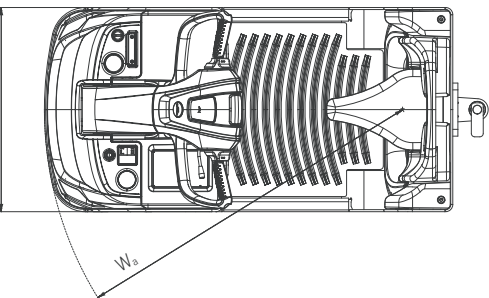
Side view LTX-T 04



Top view LTX-T 04



Side view LTX 20



Top view LTX 20

LTX Electric Tractor and Platform Truck Detailed Photos



Vehicle lighting for higher safety



Fast coupling release from the driver's compartment



Pedestrian function for efficient order picking



Fold-out seat for long driving distances

LTX Electric Tractor and Platform Truck Detailed Photos



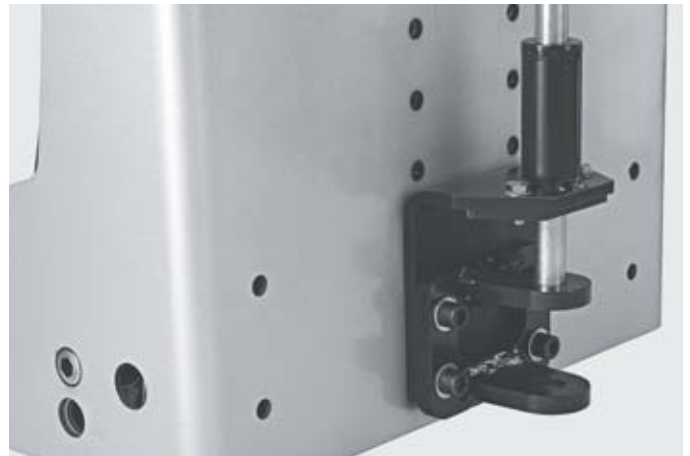
Height-adjustable steering for different drivers



Driver's compartment with logically arranged controls



Storage compartment for documents and stationery



Height-adjustable pin coupling

LTX Electric Tractor and Platform Truck

Intelligent towing

Work comfortably: low access step and spacious footwell

Use in the smallest of spaces: very manoeuvrable and compact (600 mm vehicle width)

Multifunctional: available as a tractor or a platform truck



Intelligent towing that looks unbelievably good as well. STILL’s compact LTX 20 tractor not only features a high level of functionality, but also impresses with its well-thought-out design. Design is far more than just visual appearance – take the ergonomic backrest with folding seat, for example, which protects your back and ensures that you are relaxed in your work. On the subject of work, the slimline tractor is a trooper like no other: Compact and manoeuvrable, it pulls up to two tonnes of heavy loads and on top of that achieves impressively high acceleration values. The precise and intuitive steering ensures that the operator is always in full control when handling loads.

With a width of just 600 mm, the LTX 20 is easy to manoeuvre even through the narrowest of aisles. It is ideal for tugger train solutions in lean production or for transporting baggage at airports, but is also highly suitable for use in countless other areas. For example, the LTX 20 is also an excellent way of transporting laundry around hospitals or transporting materials for many different types of repairs, especially as the back of the transport model on its own can carry up to 400 kg.

Extensive Equipment

Power

- High handling rate: pulls and transports loads of up to 2 tonnes
- Fast transport of goods: top speed of up to 8 km/h

Precision

- Precise coupling: couple trailer quickly and safely with clear view of the trailer coupling
- Bump-free and safe transport of goods: sensitive acceleration and steering as well as optional pedestrian operation

Ergonomics

- Stand comfortably: modern sprung and cushioned driver's cab
- Easy access: low step
- Simple, fast, stress-free: optional lateral battery change provides renewed energy in just a few moments
- Platform truck easy to load: load bed height of 271 mm

Compactness

- Slimline design: extremely compact and manoeuvrable

Safety

- No unintended rolling away: the automatic parking brake is activated as soon as the truck is stationary
- Be seen: optional daytime driving lights and indicators make the truck clearly visible to other drivers
- Safe on bends: good side stability when turning

Environmental Responsibility

- A shining example: long-lasting and energy-saving LED lights
- Low-maintenance: low wear and long servicing intervals (1000 operating hours)
- Sustainable: over 95 percent of all installed materials are recyclable

LTX Electric Tractor and Platform Truck Equipment Variants



		LTX 20	LTX-T 04
Driver's cab	Folding seat: folds up automatically when the driver gets up	●	●
	Integrated storage facilities; A4-size paper tray at rear	●	●
	Display of battery status, operating statuses, servicing reminders	●	●
	Adjustable steering column	●	●
Frame	Sprung stand-on platform	●	●
	Storage compartment at rear	—	●
	2 bump stops at front	●	●
	40 mm ground clearance and a very low access step as a result	●	—
Drive	80 mm ground clearance for use on uneven ground	○	●
	Maintenance-free drive motor	●	●
	Fully enclosed components which are impervious to dirt and dust	●	●
	Solid rubber tyres at front	●	●
	Superelastic tyres at rear	●	●
	Superelastic tyres, natural colour, at rear	○	○
Brake	Solid rubber tyres, natural colour, at rear	○	○
	Solid rubber tyres, natural colour, at front	○	○
	Regenerative braking system	●	●
	Energy recovery when braking	●	●
Safety and performance	Automatic parking brake	●	●
	LED daytime driving lights at front, indicators at front, brake, tail and flashing lights at rear	○	○
	Flashing lights	○	○
	2 driving programs	●	●
Battery system	PIN code access	○	○
	Battery changing with crane	●	●
	Roller track for easy lateral battery change	○	○
	Built-in charger with protection against accidental travel when the charging process is underway; HF technology, 24 V, 35 A	○	○
Additional features	One-stage trailer coupling with remote release	●	●
	Trailer coupling with 3 levels	○	○
	Pedestrian operation forwards/backwards using push buttons on the side of the backrest	○	—
	Pedestrian operation forwards using push buttons on the side of the backrest	—	○

● Standard ○ Option — Not available



STILL Materials Handling Ltd
Aston Way
Leyland Preston
PR26 7UX
Tel.: +44 (0)845 603 6827

STILL Materials Handling Ltd
Jacks Way
Hill Barton
Business Park
Clyst St. Mary
Exeter
EX5 1FG
Tel.: +44 (0)345 603 6827
info@still.co.uk
For further information please visit:
www.still.co.uk



STILL ist in den Bereichen Qualitätsmanagement, Arbeitssicherheit, Umweltschutz und Energiemanagement zertifiziert.



first in intralogistics